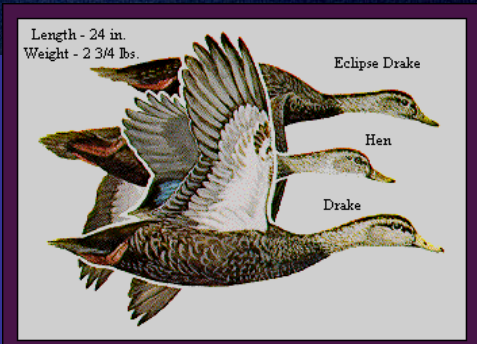
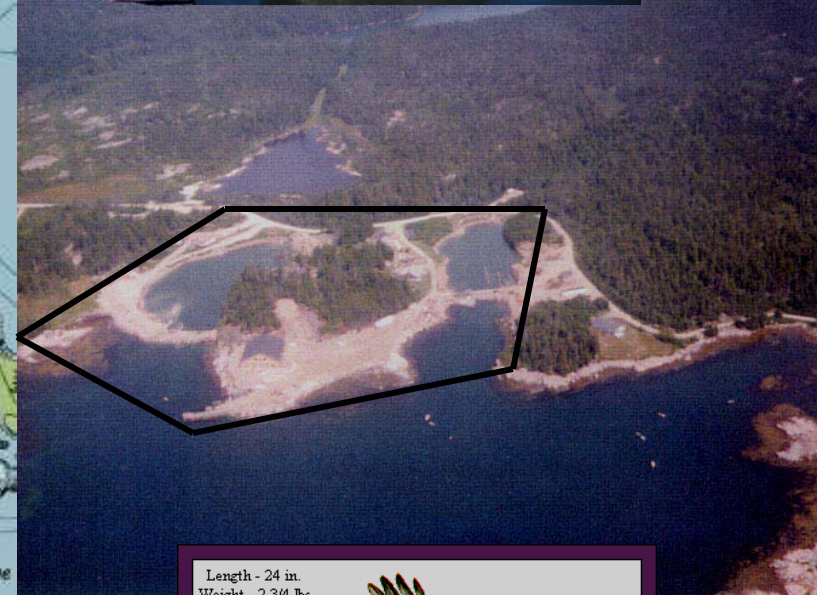


Brian F. Beal
Professor of
Marine Ecology
University of
Maine at Machias



Black Duck Cove property

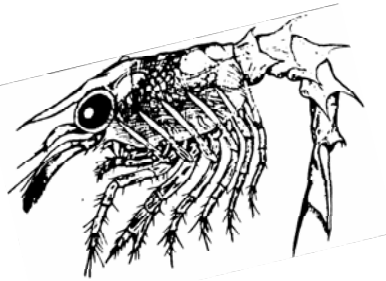
Great Wass Island, Beals, Maine







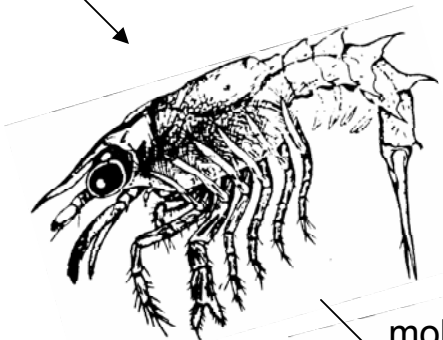




Stage I

8 mm

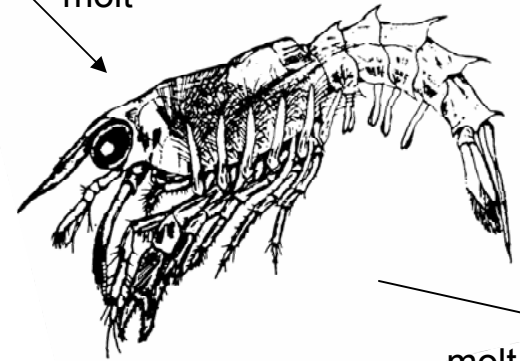
molt



Stage II

9 mm

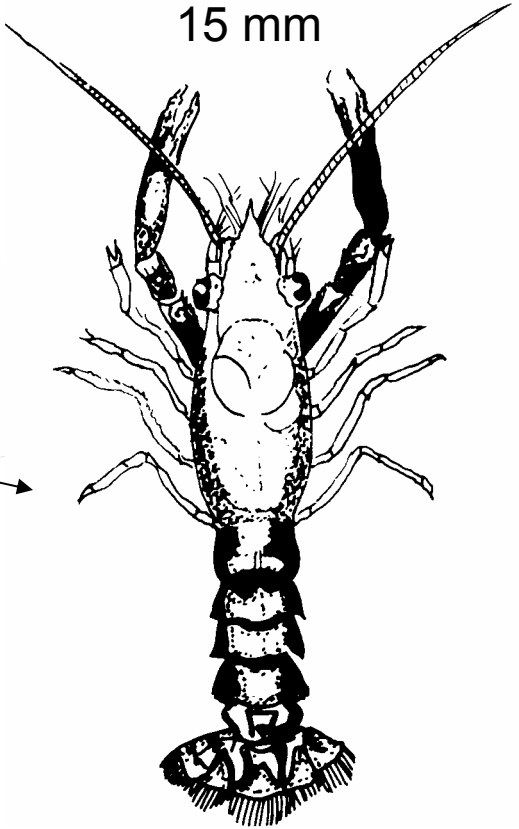
molt



Stage III

11 mm

molt



Stage IV

15 mm

Hypothesis

Post-larval lobsters (stage IV, V, VI) can live and grow by feeding on organisms that, collectively, comprise the “fouling community.”



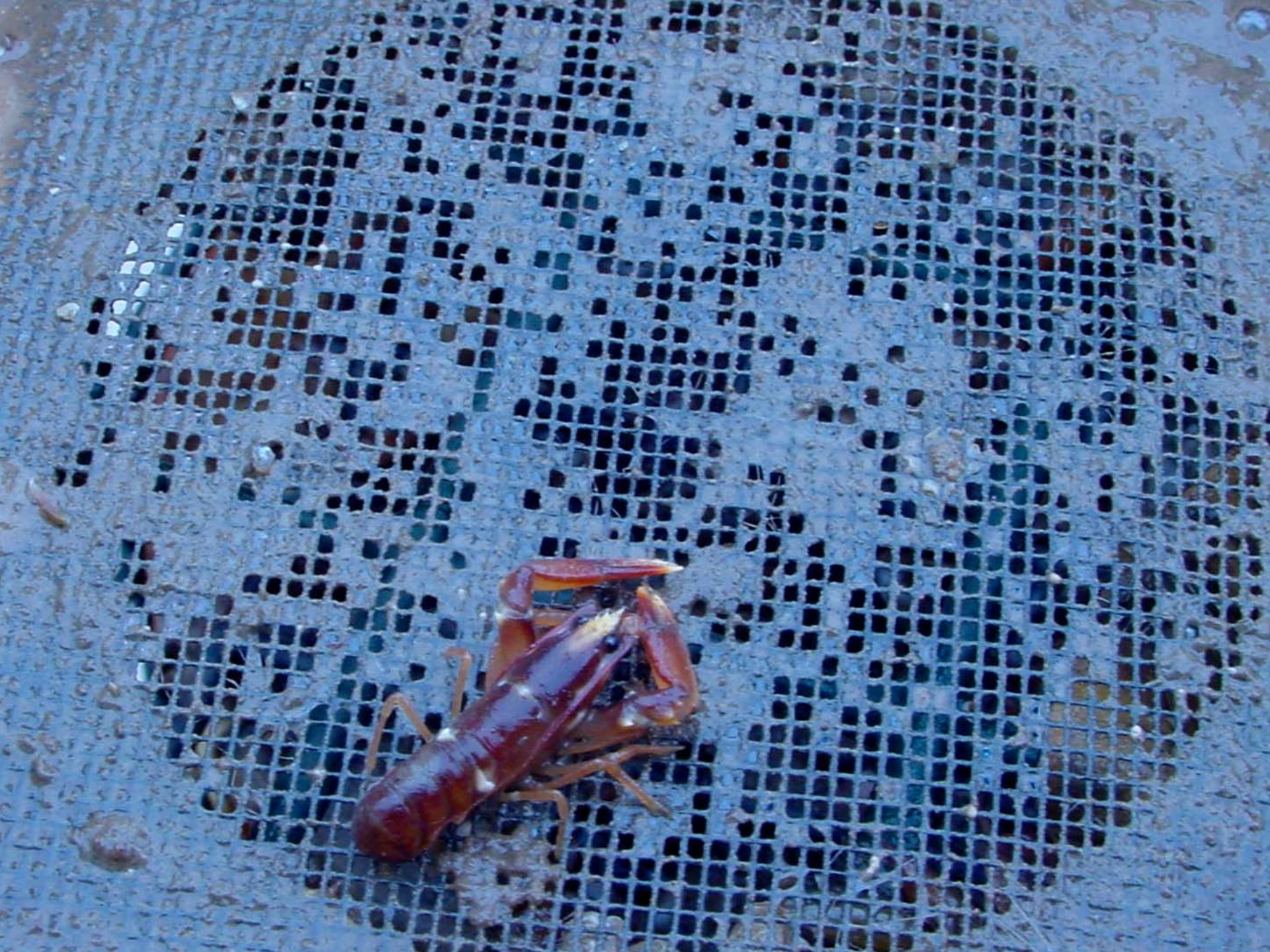


Lobster
nurseries
off
Jonesport,
Maine



August -
October,
2002





Results: August 26, 2004 to July 1, 2005



= 91.7% survival

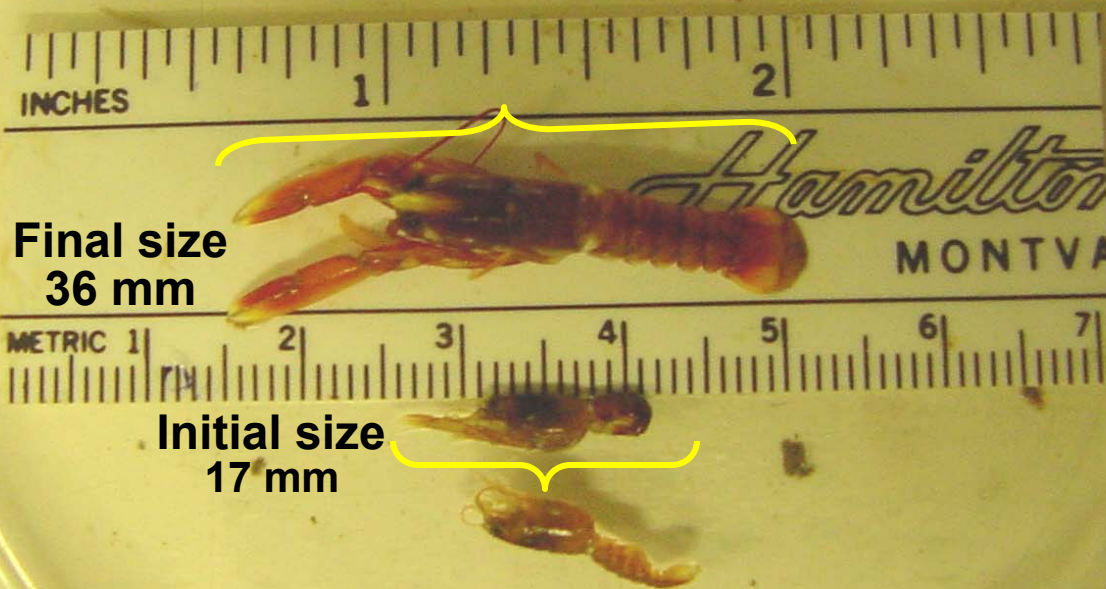


= 74.9% survival



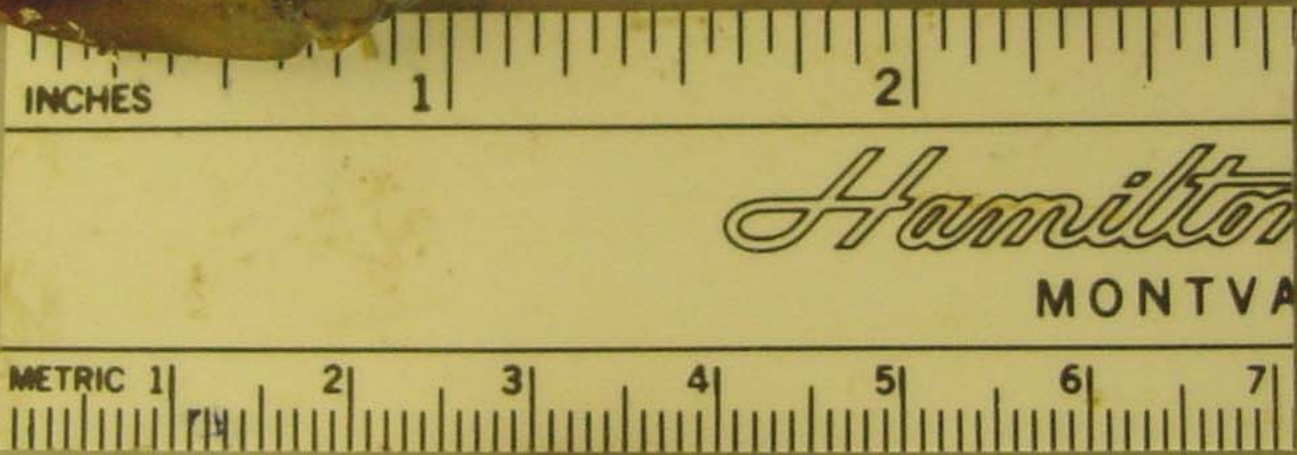
= 31.2% survival

Lobsters doubled their size over a year in petri dishes





83 mm



36 mm